

**WELCOME**

**WILDFIRES AND HURRICANES  
INDEMNITY PROGRAM**



# WHIP Assistance:

Available to eligible producers for crops, trees, bushes, and vines, which suffered a qualifying loss because of the consequences of Hurricanes Harvey, Irma, Maria, and other hurricanes and wildfires occurring in calendar year 2017, as implemented by decision of the Secretary of Agriculture.

Loss includes:

- Production losses from eligible crops
- Inventory losses for value loss crops
- Tree/Bush/Vine Loss

**Wildfires and Hurricanes Indemnity Program (WHIP)**



# Calculation for Production Loss

Acres	Expected Value
Price	
Yield	
WHIP %	
Production	Actual Value
Price	
Indemnity	
Secondary / Salvage	
WHIP Payment	

(Expected Value times WHIP factor)

= WHIP Value

*minus*

**Actual Value**

*times Share times Payment Factor*

*minus*

**Indemnity**

*minus*

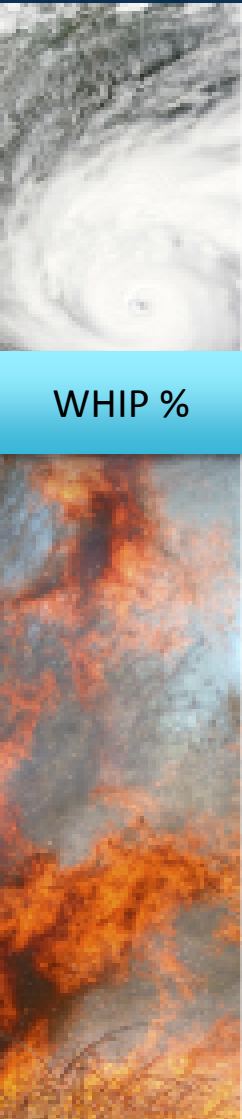
**Secondary Use and/or Salvage Value**

*equals*

**WHIP Payment**

**Wildfires and Hurricanes Indemnity Program (WHIP)**

# WHIP Factor



Coverage level	WHIP Factor
Uninsured	65%
CAT or NAP Basic 50/55	70%
50% - <55%	72.5%
55% - <60%	75%
60% - <65%	77.5%
65% - <70%	80%
70% - <75%	85%
75% - <80%	90%
> = 80%	95%

**Wildfires and Hurricanes Indemnity Program (WHIP)**



# Forms producer must complete:

FSA-890 – WHIP Application Form- Generated in County Office

FSA-891 – Crop Insurance and/or NAP Coverage Agreement

CCC-901 Member Information

CCC-902 – Farm Operating Plan of Operation- Generated in County Office

FSA-578 – Report of Acreage- Generated in County Office

AD-1026 – Highly Erodible Land Conservation and Wetland Conservation Certification

FSA-893 - 2018 Citrus Actual Production History and Approved Yield Record

*Note: Other forms may be applicable*

**Wildfires and Hurricanes Indemnity Program (WHIP)**

# Eligibility and Payment Limitation

## Adjusted Gross Income (AGI) Provisions

- Not Applicable to WHIP

## Payment Limitation:

- \$125,000

Or

- \$900,000 – If 75% of adjusted gross income is derived from farming, ranching, or forestry.

**Wildfires and Hurricanes Indemnity Program (WHIP)**



# Optional \$900,000 Payment Limitation Provisions

## Requirements:

- Prove 75% of their adjusted gross income (AGI) is derived from:
  - Farming
  - Ranching
  - Forestry
- Based on an average of taxable years:
  - 2013, 2014 and 2015

**Wildfires and Hurricanes Indemnity Program (WHIP)**



# Optional \$900,000 Payment Limitation Provisions

## Requirements cont'd:

- Complete FSA-892 Request for an Exception to the WHIP Payment Limitation of \$125,000.
- CPA or Attorney Certification of compliance:
  - Completing Part C of the FSA-892
  - Providing similar statement acceptable to FSA

**Wildfires and Hurricanes Indemnity Program (WHIP)**



# Optional \$900,000 Payment Limitation Provisions

FSA-892 Request for an Exception to the WHIP Payment Limitation of \$125,000:

- Optional to all Applicants:
  - Persons
  - Legal entities
  - Interest holders in a legal entity, including embedded entities to the 4<sup>th</sup> level of ownership.
  - Members of a general partnership or joint venture.
  - Native Americans or Tribes represented by BIA

**Wildfires and Hurricanes Indemnity Program (WHIP)**



# Optional \$900,000 Payment Limitation Provisions

Defines Income from farming, ranching or forestry:

Income Related to Livestock and Crops	Other Types of Income
Production of livestock, including but <b>not</b> limited to: <ul style="list-style-type: none"><li>• cattle, sheep, goats, swine</li><li>• elk, reindeer, bison, deer</li><li>• horses</li><li>• poultry</li><li>• fish and other aquaculture products used for food</li><li>• honeybees.</li></ul>	The sale of land that has been used for agriculture. The sale of easements and development rights to: <ul style="list-style-type: none"><li>• farmland, rangeland, or forestry land</li><li>• water or hunting</li><li>• environmental benefits..</li></ul>
The feeding, rearing, or finishing of livestock.	The rental or lease of land or equipment used for farming, ranching, or forestry operations, including water or hunting rights.
Products produced by or derived from livestock.	Any payment or benefit, including benefits from risk management practices, crop insurance indemnities, and catastrophic risk protection plans.
Production of crops, specialty crops, and unfinished raw forestry products.	

**Wildfires and Hurricanes Indemnity Program (WHIP)**

# Acres Reporting

Producers will need to provide the following information when applying for WHIP:


Tree Count by Crop, Crop Type

Spacing

Date planted

**Wildfires and Hurricanes Indemnity Program (WHIP)**

# Tree Spacing Example



A producer reports 6,894 trees planted in 1995 with 25 ft. row spacing x 12.5 ft. tree spacing.

The producer also reports 9,467 trees planted in 2014 spaced 25 ft. x 9 ft.

All trees are interplanted in a 100 acre grove.

# Tree Spacing Example (cont.)

## Calculations:

- Subfield 1A:

- 43,560 sq. ft. per ac.  $\div$  (25 ft. between rows  $\times$  12.5 ft. between trees) = 139.39 trees/ac.

- 6,894 trees  $\div$  139.39 trees/ac. = 49.46 acres

- Subfield 1B:

- 43,560 sq. ft. per ac.  $\div$  (25 ft. between rows  $\times$  9 ft. between trees) = 193.6 trees/ac.

- 9,467 trees  $\div$  193.6 trees/ac. = 48.90 acres

**Wildfires and Hurricanes Indemnity Program (WHIP)**

# Determining Eligible Acreage

## Eligible Acreage Data Sources for the year of loss

Type of Crop	Data Source
Insured Crops	Acreage data will be provided by insurance and compared to FSA-578
Uninsured Crops	Acreage data will be obtained from FSA-578

- For insured crops if there is a difference between data, use the **lesser** of insurance or FSA acres


**Wildfires and Hurricanes Indemnity Program (WHIP)**

## Units

- Insured crops will use insurance units
- Uninsured crops will have units established according to share relationship



**Wildfires and Hurricanes Indemnity Program (WHIP)**



WHIP payments for most crops will be determined either by the insurance data or the county average yield for uninsured applicants.

Due to the type of insurance policies administered in the State of Florida for citrus, participants will be permitted to prove their yield using the last five crop years.

**Wildfires and Hurricanes Indemnity Program (WHIP)**





Participants will certify yields on an FSA- 893 by providing up to five years of production harvested and acres grown.

- Records obtained are not required to be maintained in the CO because this is a certification.
- COC has the authority to monitor and question any yields that appear to be inconsistent with other participants.

**Wildfires and Hurricanes Indemnity Program (WHIP)**

# Florida Citrus Yield Provisions

When participants provide yields and acreage they must be for continuous years.



**Wildfires and Hurricanes Indemnity Program (WHIP)**



# Florida Citrus Yield Provisions

What years will be used on the FSA-893?



<b>Year of ownership</b>	<b>Records available</b>
2017	Yes
2016	Yes
2015	Yes
2014	Yes
2013	No

**Wildfires and Hurricanes Indemnity Program (WHIP)**



# Florida Citrus Yield Provisions

**Answer:**



**Wildfires and Hurricanes Indemnity Program (WHIP)**

# Florida Citrus Yield Provisions

What years will be used on the FSA-893?

Year of ownership	Records available
2017	Yes
2016	Yes
2015	No
2014	Yes
2013	Yes

**Wildfires and Hurricanes Indemnity Program (WHIP)**



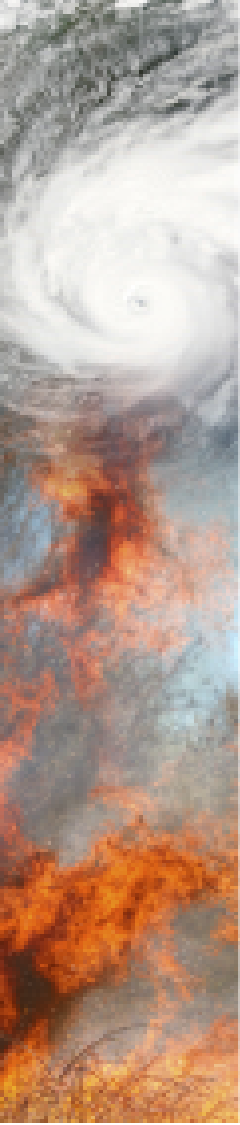
# Florida Citrus Yield Provisions

**Answer:**



**Wildfires and Hurricanes Indemnity Program (WHIP)**

# Florida Citrus Yield Provisions



If a participant did not own the grove for the entire five year history, COC has authority to allow participants to provide production records for previous year's owner(s) up to the five years allowed.

COC will review documents provided for proof of production and acres grown of previous owner(s).

**Wildfires and Hurricanes Indemnity Program (WHIP)**

## Calculating Yields

Participants will certify production harvested and acres grown for the previous 5 crop years. A simple average will be calculated to determine the yield that will be used in the WHIP calculation.

**Wildfires and Hurricanes Indemnity Program (WHIP)**



## Example 1:

Participant applied for WHIP for 2018 citrus losses due to Hurricane Irma. The participant will certify to production for 2017, 2016, 2015, 2014, and 2013. He owned 100 acres in 2017-2014. However, in 2013 he only owned 75 acres. The additional 25 acres was purchased prior to harvest season in 2014.

**Wildfires and Hurricanes Indemnity Program (WHIP)**



# Florida Citrus Yield Provisions

## PART B – CROP INFORMATION

5. Crop Name	6. Crop Type	7. Intended Use	8. Practice	9. Organic Status	10. Unit of Measure
Orange	NAV	PR	I		Boxes

## PART C – ACTUAL PRODUCTION HISTORY (APH)

### COC USE ONLY

11. APH Crop Year	12. Planted Acres	13. Actual Production	14. Yield
2017	100	30,000	300
2016	100	42,100	421
2015	100	47,526	475
2014	100	48,362	484
2013	75	36,750	490

## PART D - APPROVED YIELD (COC USE ONLY)

15. Total Yield (Item 14)	16. No. of APH Crop Years (Item 11)	17. Calculated Yield
2170	5	434

divided by =

## PART E- PRODUCER'S CERTIFICATION

18. Remarks

**Wildfires and Hurricanes Indemnity Program (WHIP)**

# Florida Citrus Yield Provisions

## Example 2:

Participant purchased a 20 acre grove in 2015. Participant applied for WHIP for 2018 citrus losses due to Hurricane Irma. The participant will certify to production for 2017, 2016, and 2015 crop years for the 20 acre grove.

**Wildfires and Hurricanes Indemnity Program (WHIP)**



# Florida Citrus Yield Provisions

## PART B – CROP INFORMATION

5. Crop Name	6. Crop Type	7. Intended Use	8. Practice	9. Organic Status	10. Unit of Measure
Orange	NAV	PR	I		Boxes

## PART C – ACTUAL PRODUCTION HISTORY (APH)

### COC USE ONLY

11. APH Crop Year	12. Planted Acres	13. Actual Production	14. Yield
2017	20	5400	270
2016	20	7020	351
2015	20	9120	456
2014			
2013			

## PART D - APPROVED YIELD (COC USE ONLY)

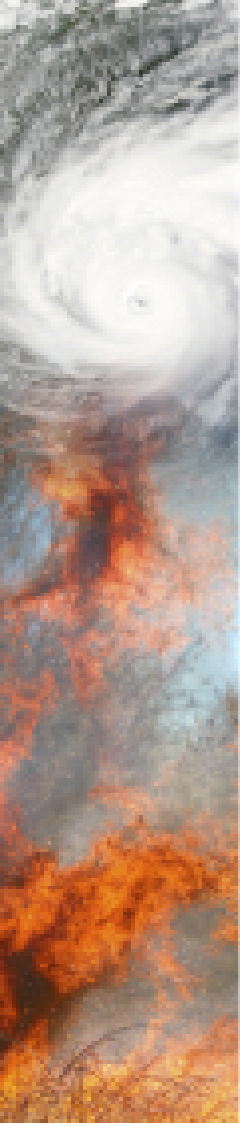
15. Total Yield (Item 14)	16. No. of APH Crop Years (Item 11)	17. Calculated Yield
1077	3	359

divided by      =

## PART E- PRODUCER'S CERTIFICATION

**Wildfires and Hurricanes Indemnity Program (WHIP)**

# Florida Citrus Yield Provisions



If the participant purchased the grove in 2017, prior to the qualifying disaster event and previous year's production are not available from prior owners of the grove, then the participant would be eligible; however, the county average yield would be used as the yield for the WHIP calculation.

**Wildfires and Hurricanes Indemnity Program (WHIP)**

# Florida Citrus Yield Provisions

In summary:

- Producers can provide up to five years of history of production and acreage
- If they cannot provide any years, the county average yield will be used
- This **only** applies to FL Citrus



**Wildfires and Hurricanes Indemnity Program (WHIP)**



WHIP price will be based on an approved price by the Florida State Committee.

**Wildfires and Hurricanes Indemnity Program (WHIP)**

# Harvested Production

**Harvested** production is:


The **total** amount of harvested production for the unit supported by an acceptable record and/or **certification** by the producer.

**Note:** Production from all harvests of an eligible crop harvested more than once in a crop year will include **TOTAL** harvested production from the entire crop year.

Wildfires and Hurricanes Indemnity Program (WHIP)



# Producer Responsibilities



Producers must provide accurate and complete acreage and production reports for **all** WHIP eligible crops on a unit.

Producer's signature on FSA-890 is the producer's certification that the records provided are correct and includes **TOTAL** crop production for the unit

**Wildfires and Hurricanes Indemnity Program (WHIP)**

# Acceptable Production Records

Acceptable production records include:

- Verifiable records
- Reliable records



**Wildfires and Hurricanes Indemnity Program (WHIP)**

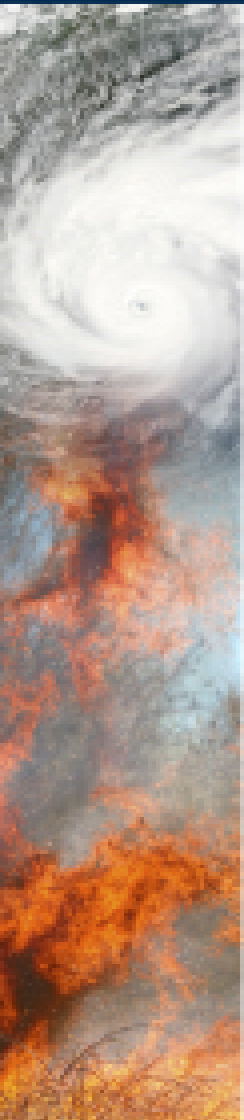
## Verifiable Records:

- May be verified by FSA through an independent source
- Are used to substantiate the amount of production reported
  - Dated
  - Show quantity, price, and final disposition
  - Seasonal or crop specific for commodities produced more than once in a calendar year

Wildfires and Hurricanes Indemnity Program (WHIP)

## Examples of **Verifiable** records:

- Sales receipts from buyers
- Settlement sheets
- Invoices from custom harvesting
- Truck or warehouse scale tickets



**Reliable** records are:

Records provided by the producer that County Office Committee determines are adequate to substantiate the amount of production reported when verifiable records are not available.

**Wildfires and Hurricanes Indemnity Program (WHIP)**

# Acceptable Production Records

Examples of **Reliable** records:

- Ledgers of commodity sales volume/income
- Income statements of deposits
- Records to verify production input costs
- Producer diaries, ledgers, receipts
- Pick records
- Other USDA program data



**Wildfires and Hurricanes Indemnity Program (WHIP)**

# COC Responsibilities

If County Office Committee cannot determine the records are verifiable or reliable, the **higher** of the following will be used:

- Producer's certified production
- Assigned production using the Florida State Committee approved County Disaster Yield

Wildfires and Hurricanes Indemnity Program (WHIP)

# County Disaster Yield

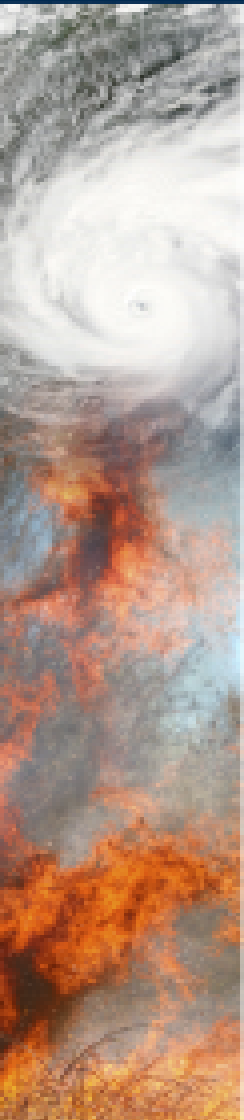
**County Disaster Yields (CDY)** defined as:

The average yield per acre for a county or area of a county for the current year based on disaster events, and is intended to reflect the amount of production that a participant would have been expected to produce based on the eligible disaster conditions in the county or area.

Wildfires and Hurricanes Indemnity Program (WHIP)



# County Disaster Yield



The only time the CDY will be used if there are no other production records, verifiable or reliable, available.

**Wildfires and Hurricanes Indemnity Program (WHIP)**

# Example 1 - SCENARIO



- Adam Orange from Hendry County, Florida had a loss on his 2018 Naval Oranges due to a Hurricane that occurred 9/10/2017 through 9/13/2017.
- His 50 acres of naval oranges were insured.
- The production to count was 3,028 boxes and his approved yield that came from the FSA-893 was 242.4.

**Wildfires and Hurricanes Indemnity Program (WHIP)**

# Example 1 – DATA ELEMENTS

- Other data elements needed are:
  - Coverage Level = 75%
  - Price Election = 100%
  - WHIP Factor = 90%
  - Unharvested Payment Factor = 100%
  - Indemnity = 81,900
  - Price = 36.96
  - Guarantee Adj. Factor = 100%

**Wildfires and Hurricanes Indemnity Program (WHIP)**



# Calculation for Production Loss

Acres	Expected Value
Price	
Yield	
WHIP %	
Production	Actual Value
Price	
Indemnity	
Secondary / Salvage	
WHIP Payment	

(Expected Value times WHIP factor)

= WHIP Value

minus

Actual Value

times Share times Payment Factor

minus

Indemnity

minus

Secondary Use and/or Salvage Value

equals

**WHIP Payment**

Wildfires and Hurricanes Indemnity Program (WHIP)

# WHIP Value

Acres	Expected Value
Price	
Yield	
WHIP %	

$$50 \times \$36.96 \times 242.4 =$$

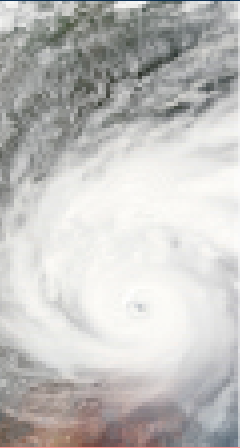
(Acres) (Price) (Yield)

$$447,955.2 \times 90\% = 403,159.68$$

(Expected Value) (WHIP Factor) (WHIP Value)

**Wildfires and Hurricanes Indemnity Program (WHIP)**

# Actual Value



Production

Price

Actual Value

$$3028 \times \$36.96 = \$111,914.88$$

(Production)      (Price)                      (Actual Value)



**Wildfires and Hurricanes Indemnity Program (WHIP)**



# WHIP Calculation

	Expected Value
WHIP %	
	Actual Value
Indemnity	
Secondary / Salvage	
WHIP Payment	

WHIP Value \$403,159.68

*minus*

**Actual Value \$111,914.88**

*times* Share 100% *times* Payment Factor 100%

*minus*

**Indemnity \$81,900**

*minus*


**Secondary Use \$0 and/or Salvage Value \$0**

*equals*

**WHIP Payment \$209,345**

**Wildfires and Hurricanes Indemnity Program (WHIP)**

# Linkage Requirements



As a condition of maintaining eligibility for WHIP benefits, producers are required to purchase crop insurance, or NAP as applicable, on the crop, tree, bush, or vine for the next two consecutive available crop years after the 2017 WHIP enrollment period ends and ending with the 2021 crop year.

**Wildfires and Hurricanes Indemnity Program (WHIP)**



# Linkage Requirements

Insurable Crops, Trees, Bushes, and Vines

obtain crop insurance at a level of 60/100 or equivalent, if available

NAP Crops

obtain NAP coverage at a level of at least 60/100, if available, including filing annual acreage report

Purchase Whole Farm Revenue Protection (WFRP)

**Wildfires and Hurricanes Indemnity Program (WHIP)**

# Linkage Requirements

The linkage requirement applies to the producer's interest in the crop in the county where the crop is located.

- Physical county for insured crops
- Administrative county for NAP crops
- Applies to crop type, intended use, and planting period.

**Wildfires and Hurricanes Indemnity Program (WHIP)**

*That's all Folks!*